



Operation Manual
Magnetically coupled low voltage DC pump
OceanProp 15000



Current pump for fresh and salt water aquariums

In purchasing this pump you have selected a top quality product. It has been specifically developed for aquarium use and extensively tested by experts.

1. Delivery

- **OceanProp** adjustable current pump, 24 V DC, with computer optimized propeller.
- **Leverage sucker** for safe fixing of the pump in the aquarium, not dependent on the thickness of the glass. With ball joint to adjust the flow direction.
- **OceanProp Control** – automatic pump controller with 9 different current sceneries to create changing currents.
- **Electronic safety transformer, 100 – 240 V, 50 watts max.**

2. Features

The **OceanProp 15000** magnetically coupled current pump is very quiet in operation. They have fully encapsulated synchronous motors and can operate completely safely submerged. The polished ceramic shaft and bearing is practically wear-resistant, ensuring a long operating life. An integrated thermal overheat protection device prevents damage to the windings should the impeller rotation be impeded. The pumps can easily be taken apart for cleaning. All materials are salt-water resistant.

The pump is operated with 24 V safety voltage, the transformer is included in the shipment. The propeller of the rotor is designed as a 3 wing model and computer-optimized.

The pump is adjustable. The automatic pump controller OceanProp control is included in the shipment. 9 different current programs can be chosen.

A leverage sucker was developed to fix the pump at the glass panel with a special softener-free sucker plate. The leverage creates a vacuum and fixes the sucker safely.

3. Technical data, table 1

Type:	OceanProp 15000
Voltage pump:	15 – 24 V DC
Power uptake, watts:	9 – 20 W
Voltage transformer: Maximum capacity:	100 – 240 V, 50 – 60 Hz, 50 Watts
Max. l/h:	15,000
Min. l/h:	5,000
Cable length in m: pump: transformer:	2,8 1,50
Class/protection rating:	1/IP 68
Max. depth:	1 m ∇ 1m
Max. media temperature:	35°C

4. Exploded parts diagram

Fig. 1: OceanProp 15000

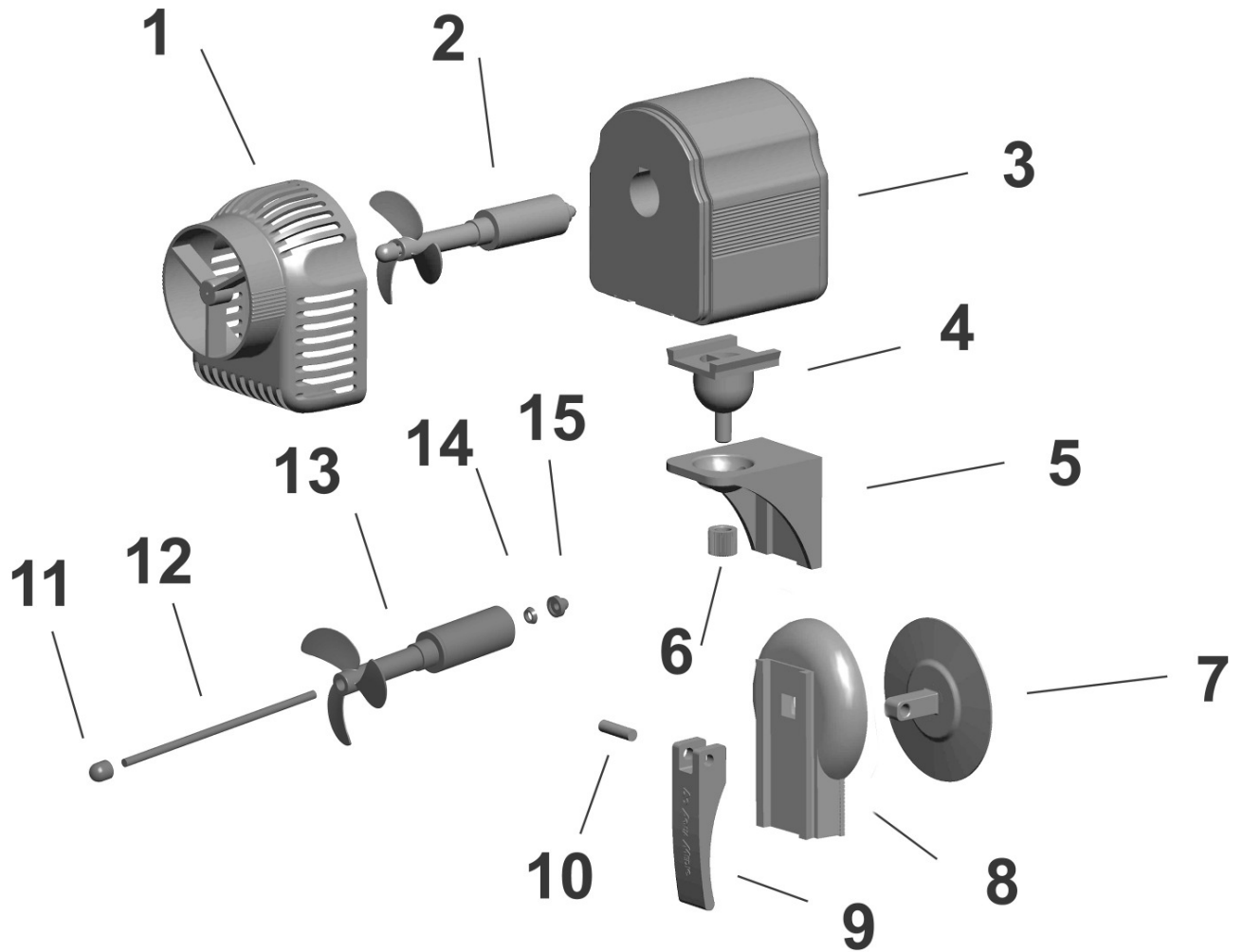


Fig. 1: Exploded parts diagram OceanProp 15000

- | | | |
|-------------------|--------------------|---------------------------|
| 1. Filter basket | 6. Securing nut | 11. Rubber bearing, front |
| 2. Rotor assembly | 7. Rubber sucker | 12. Ceramic shaft |
| 3. Motor | 8. Sucker plate | 13. Rotor |
| 4. Ball joint | 9. Leverage handle | 14. Ceramic bearing |
| 5. Pump holder | 10. Splint | 15. Rubber bearing, back |

5. Set Up

The pump can only be operated under water. The maximum depth is 1 m. The pump should be mounted at least 10 cm below the water surface to avoid air to be sucked in. The pump is a pure current pump. No piping or hoses may be attached to it in order to lift water up. The pump has got a ceramic bearing that needs a few days to get going. During this time, there will be more noises of the pump to be heard.

Fixing: To fix the pump at the aquarium glass, the sucker has to be mounted first. The place where it shall be mounted is to be cleaned – preferably with a blade cleaner. We recommend to use the Aqua Medic Scraper. Now, the sucker is placed and the lever is put vertically and pressed to the glass (Fig. 2). Then, the lever is turned down (Fig. 3) and a vacuum is created. The holder with the pump can now be fixed on the sucker.

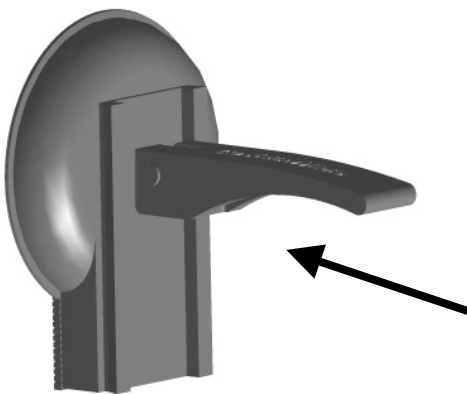


Fig. 2: Hold lever straight and press it against the glass.

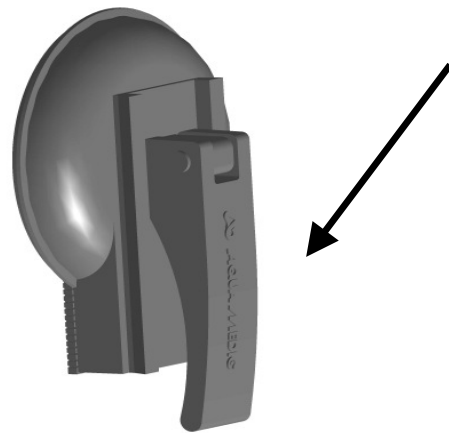


Fig. 3: Turn lever down to create a vacuum.

Caution: The pump is delivered with a strong vacuum sucker that holds the pump safely. However, to avoid any risk, we recommend not to mount the pump directly above fragile animals or decoration to avoid any damage in case the pump drops down. Furthermore, it has to be checked regularly whether there are algae behind the sucker. They have to be removed.

The pump is open at the front. Therefore, it should never be started uncontrolled, e. g. via a time switch. Animals could be in the sucking in basket and they could be injured or killed by the starting propeller.

Safety advices

The pump is constructed for indoor aquarium use only. Before working on the aquarium or pump, the power plug must be disconnected from the mains.



The connection cable and the power plug must not be changed. If the power cable is damaged, the pump must be scrapped.

6. OceanProp Control

In order to create changing currents in the aquarium, the pump controller is mounted between power unit and pump. The pump is now switched between 2 speeds, minimum and maximum. With the "mode" button one of 9 current sceneries can be selected. The controller is switched in steps of 15 sec. Take off protection foil before operation.



Fig. 4. OceanProp Control

1. On/off button
2. Mode button
3. Night mode button
4. Light sensor
5. LED Display also showing the night mode (right spot)
6. Connection socket for the transformer
7. Connection cable with plug for the pump

Mode	Program
0	off
1	Permanent Min
2	Permanent Max
3	0-0-0-0-1-1-1-1
4	1-0-0-1-0-0
5	1-0-1-0-1-0-1-0-1-0
6	0-0-1-0-0-0-1-1-1-1-0
7	0-1-1-1-0-0
8	1-0-1-1-1-0-1-1
9	Random mode

The table shows:

- 0** = one step (15 sec.) with min capacity (5,000 l/h)
- 1** = one step (15 sec.) with max capacity (15,000 l/h)

The change between min. and max. capacity is smoothly during 15 sec.

Example: mode 3:

- 4 steps = 4 x 15 sec. = 60 sec. with min. capacity, followed by
- 4 steps = 60 sec. with max. capacity.

Table: Programs of the OceanProp Control

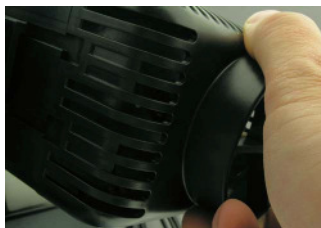
Night Mode: By selecting the "Night" button, the night mode is activated. This is shown by a red light in the display. In this mode, the controller switches the pump constantly to minimum capacity during darkness. The light sensor is located in the upper right corner (4). If the night mode is activated, the OceanProp Control has to be mounted in a well illuminated area, exposed to daylight or to the aquarium lighting. As soon as it gets dark, the pump runs with minimum capacity. When it gets bright again, the pump is operated with the adjusted program. Switching takes place with a delay of 1 - 2 minutes.

The pump may as well be operated without the OceanProp Control. If the pump cable is directly connected to the transformer, the pump is constantly operated at maximum power. Running noises are inevitable with pumps of this power category when operated at full power. If the pump is operated in mode 1 or night operation in weakly lit or dark environment, the pump only runs with 5.000 l/h and is nearly soundless.

7. Maintenance/Cleaning

The pump is designed to have low maintenance requirements and under normal conditions will be very reliable. However, the filter housing and all rotating parts must be cleaned regularly.

For cleaning, first the filter basket has to be removed. To do so, touch it at the discharge opening by one hand and tear it off. This is very important. If the basket is hold at other points (e.g. at the back), it cannot be removed. Take care not to tilt it. **The shaft may break.**



After having taken the basket off, the entire rotor assembly can be pulled out. It can be cleaned under running water and inserted again.

8. Failures

If the pump fails to operate, check the power connection. If the pump is noisy, the filter basket and propeller have to be cleaned. If the magnet or the impeller is damaged, both can be changed.

9. Warranty

Should any defect in materials or workmanship be found within twelve months of the date of purchase AB Aqua Medic undertakes to repair, or at our option replace, the defective part free of charge – always provided the product has been installed correctly, is used for the purpose that was intended by us, is used in accordance with the operating instructions and is returned to us carriage paid. Proof of Purchase is required by presentation of the original invoice or receipt indicating the dealer's name, the model number and date of purchase, or a Guarantee Card if appropriate. This warranty may not apply if any model or production number has been altered, deleted or removed, unauthorised persons or organisations have executed repairs, modifications or alterations, or damage is caused by accident, misuse or neglect. We regret we are unable to accept any liability for any consequential loss.

Please note that the product is not defective under the terms of this Warranty where the product, or any of its component parts, was not originally designed and / or manufactured for the market in which it is used. these statements do not affect your statutory rights as a customer.

If your AB Aqua Medic product does not appear to be working correctly or still appears to be defective having followed the instructions in 6. & 7. please contact your dealer in the first instance. Before calling your dealer please ensure you have read and understood the operating instructions. If you have any questions your dealer cannot answer please contact us

AB AQUA MEDIC GmbH - Gewerbepark 24 - 49143 Bissendorf/Germany

- Technical changes reserved -

06/2009